

COMPENSATED AND CALIBRATED LOW PRESSURE SENSOR



Product Number: SM5652

HIGHLIGHTS

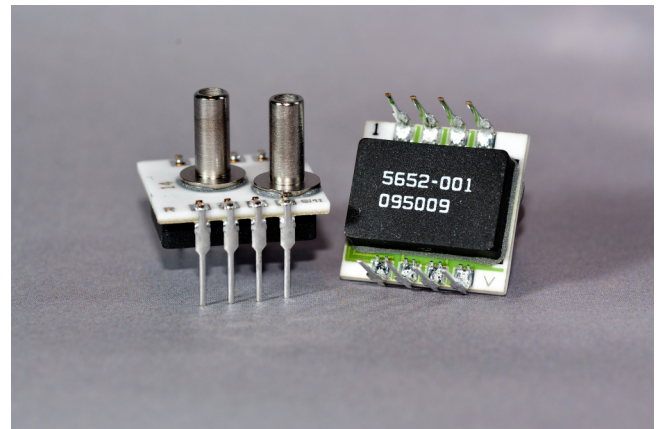
- Low pressures for sensitive applications
- Constant voltage driven
- Dual inline package (DIP)
- Fully temperature compensated and calibrated

TYPICAL APPLICATIONS

- Medical equipment
- Respiration
- HVAC
- Level detection
- Flow measurement
- Industrial control

TECHNICAL FEATURES

- 0.15, 0.3, 0.8 & 1.5 PSI (1.0, 2.1, 5.5 & 10.3 kPa)
- Easy-to-use dual inline package (DIP)
- Zero offset calibration
- High-performance, stable, packaged silicon chip
- Wide 0-60°C compensated temperature range
- RoHS & REACH Compliant



DESCRIPTION

The SM5600 Series of OEM pressure sensors are laser trimmed for enhanced performance, temperature-compensated, low-pressure sensors in dual in-line packages for printed circuit board mounting. These sensors offer improved performance, as well as the option for constant voltage excitation. With the ability to detect pressure ranges as low as 0.15 PSI, the SM5652 is ideal for applications requiring extreme sensitivity from respiration to air filter obstructions.

The SM5600 Series pressure sensors are constructed by attaching a highly stable piezoresistive pressure sensor chip to a ceramic substrate. Thick film resistors on the ceramic are laser trimmed during manufacturing to provide zero offset calibration, temperature compensation for zero offset, and temperature compensation for sensitivity.

Various pressure port configurations are available for flexibility in matching this product to specific applications.

Product Number: SM5652

ABSOLUTE MAXIMUM RATING TABLE FOR SM5652All parameters are specified at $V_{\text{SUPPLY}} = 10.00 \text{ V}$ DC supply at 25°C , unless otherwise noted.

| No. | Characteristic | Symbol | Minimum | Typical | Maximum | Units |
|-----|--------------------------------------|---------------------|---------|---------|---------|--------------------|
| 1 | Excitation Voltage | V_{SUPPLY} | 0 | 10 | 20 | V |
| 2 | Operating Temperature ^(d) | T_{OP} | -40 | | +125 | $^{\circ}\text{C}$ |
| 3 | Storage Temperature ^(d) | T_{STG} | -40 | | +125 | $^{\circ}\text{C}$ |
| 4 | Media Compatibility ^(d) | | | | | |

NOTES:

(d) Tested on a sample basis.

| No. | Product Number | Operating Pressure | Proof Pressure (P_{PROOF}) ^(d) | Burst Pressure (P_{BURST}) ^(d) |
|-----|----------------|--------------------|--|--|
| 5 | SM5652-001-D | -0.15 to 0.15 PSI | $\pm 1.5 \text{ PSI}$ | $\pm 2.25 \text{ PSI}$ |
| 6 | SM5652-003-D | -0.30 to 0.30 PSI | $\pm 3.0 \text{ PSI}$ | $\pm 4.5 \text{ PSI}$ |
| 7 | SM5652-003-G | 0 to 0.30 PSI | $\pm 3.0 \text{ PSI}$ | $\pm 4.5 \text{ PSI}$ |
| 8 | SM5652-008-D | -0.80 to 0.80 PSI | $\pm 8 \text{ PSI}$ | $\pm 12 \text{ PSI}$ |
| 9 | SM5652-015-D | -1.50 to 1.50 PSI | $\pm 15 \text{ PSI}$ | $\pm 22.5 \text{ PSI}$ |

OPERATING CHARACTERISTICS FOR SM5652 - SPECIFICATIONSAll parameters are specified at $V_{\text{SUPPLY}} = 10.00 \text{ V}$ DC supply at 25°C , unless otherwise noted.

| No. | Characteristic | Symbol | Minimum | Typical | Maximum | Units |
|-----|--|---------------------|---------|---------|---------|--------------------|
| 10 | Zero Offset | V_{ZERO} | -2.0 | +0.2 | +2.0 | mV |
| 11 | Pressure Hysteresis ^(d) | $H_{\text{P,ZERO}}$ | -0.30 | 0.05 | 0.30 | %FS |
| 12 | Resistance Input | R_{B} | 9.0 | 20 | 30 | k Ω |
| 13 | Resistance Output | $R_{\text{B,OUT}}$ | 2.0 | 2.5 | 3.8 | k Ω |
| 14 | Compensated Temp. Range ^(c) | T_{COMP} | 0 | | 60 | $^{\circ}\text{C}$ |

| No. | Characteristic | Symbol | Minimum | Typical | Maximum | Units |
|-----|---|-------------------|---------|---------|---------|-------|
| 15 | Span (FS p_{RANGE}) ^{(a),(b)} | V_{SPAN} | 23.75 | 25.0 | 26.25 | mV |
| 16 | Thermal Accuracy - Span ^(c) | TCS | -2.0 | 0.2 | 2.0 | % FS |
| 17 | Thermal Accuracy - Zero Offset ^(c) | TCZ | -2.0 | 0.2 | 2.0 | % FS |
| 18 | Temperature Hysteresis ^(d) | H_{T} | -0.65 | 0.05 | 0.65 | %FS |
| 19 | Linearity ^(d) | NL | -2.50 | 0.05 | 2.50 | %FS |
| 20 | Repeatability ^(d) | REP | -0.30 | 0.05 | 0.30 | %FS |

NOTES:

(a) Positive Pressure is defined as entry on the bottom side of the die; gain, during factory calibration, is set using negative pressure.

(b) Values given for top side.

(c) Measured over a temperature range of 22°C to 58°C .

(d) Tested on a sample basis.

Product Number: SM5652

0.3 PSI / 2.1 kPa

| No. | Characteristic | Symbol | Minimum | Typical | Maximum | Units |
|-----|--|-------------------|---------|---------|---------|-------|
| 21 | Span (FS p_{RANGE}) ^{(a),(b)} | V_{SPAN} | 24.5 | 25.0 | 25.5 | mV |
| 22 | Thermal Accuracy - Span ^(c) | TCS | -0.75 | 0.2 | 0.75 | % FS |
| 23 | Thermal Accuracy - Zero Offset ^(c) | TCZ | -1.0 | 0.2 | 1.0 | % FS |
| 24 | Temperature Hysteresis ^(d) | H_T | -0.45 | 0.05 | 0.45 | %FS |
| 25 | Linearity ^(d) | NL | -0.50 | 0.05 | 0.50 | %FS |
| 26 | Repeatability ^(d) | REP | -0.30 | 0.05 | 0.30 | %FS |

NOTES:

(a) Positive Pressure is defined as entry on the bottom side of the die; gain, during factory calibration, is set using negative pressure.

(b) Values given for top side.

(c) Measured over a temperature range of 22°C to 58°C.

(d) Tested on a sample basis.

0.8 PSI / 5.5 kPa & 1.5 PSI / 10.3 kPa

| No. | Characteristic | Symbol | Minimum | Typical | Maximum | Units |
|-----|--|-------------------|---------|---------|---------|-------|
| 27 | Span (FS p_{RANGE}) ^{(a),(b)} | V_{SPAN} | 24.5 | 25.0 | 25.5 | mV |
| 28 | Thermal Accuracy - Span ^(c) | TCS | -0.65 | 0.2 | 0.65 | % FS |
| 29 | Thermal Accuracy - Zero Offset ^(c) | TCZ | -1.0 | 0.2 | 1.0 | % FS |
| 30 | Temperature Hysteresis ^(d) | H_T | -0.30 | 0.05 | 0.30 | %FS |
| 31 | Linearity ^(d) | NL | -0.30 | 0.05 | 0.30 | %FS |
| 32 | Repeatability ^(d) | REP | -0.30 | 0.05 | 0.30 | %FS |

NOTES:

(a) Positive Pressure is defined as entry on the bottom side of the die; gain, during factory calibration, is set using negative pressure.

(b) Values given for top side.

(c) Measured over a temperature range of 22°C to 58°C.

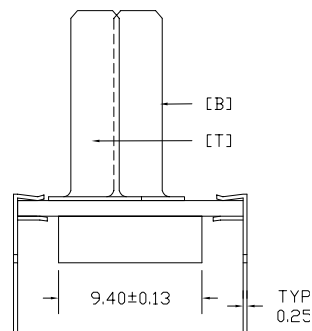
(d) Tested on a sample basis.

Qualification Standards

- REACH Compliant
- RoHS Compliant
- PFOS/PFOA Compliant
- For qualification specifications, please contact Sales at sales@si-micro.com



Package Dimensions & Pin-Out



| PIN | DESCRIPTION |
|-----|-------------|
| 1 | Sig- |
| 2 | -Vexc |
| 3 | Sig+ |
| 4 | +Vexc |
| 5 | NC |
| 6 | NC |
| 7 | NC |
| 8 | NC |

All dimensions are shown in millimeters

NOTES:

- Do not connect to NC pins.
- External connections to NC pins will cause part malfunction.
- [B] is tube connected to bottom side of sensor die.
- [T] is tube connected to top side of sensor die.
- Tube [B] is used for positive differential pressure.
- Not to exceed 5kg force on tubes.

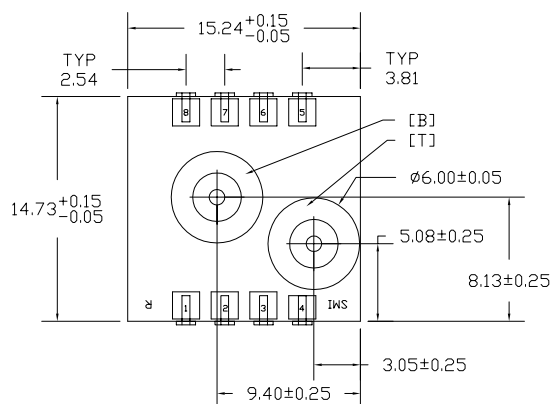
Pressure Type:

D: Differential (2 Tubes)
G: Gauge (1 Tube, [B] tube only)

Tube Length:

L: Long (12.45 mm \pm 0.10 mm)
S: Short (8.25 mm \pm 0.10 mm)

Side View



Top View

| Order Code | Pressure Type | Full-Scale Pressure Range | Tube Length |
|-----------------|---------------|---------------------------|-------------|
| 5652-001-D-3-LR | Differential | 0.15 PSI / 1.0 kPa | Long |
| 5652-001-D-3-SR | Differential | 0.15 PSI / 1.0 kPa | Short |
| 5652-003-D-3-LR | Differential | 0.3 PSI / 2.1 kPa | Long |
| 5652-003-D-3-SR | Differential | 0.3 PSI / 2.1 kPa | Short |
| 5652-003-G-3-SR | Gauge | 0.3 PSI / 2.1 kPa | Short |
| 5652-008-D-3-SR | Differential | 0.8 PSI / 5.5 kPa | Short |
| 5652-008-G-3-SR | Gauge | 0.8 PSI / 5.5 kPa | Short |
| 5652-015-D-3-LR | Differential | 1.5 PSI / 10.3 kPa | Long |
| 5652-015-D-3-SR | Differential | 1.5 PSI / 10.3 kPa | Short |

For samples, please contact sales@si-micro.com.